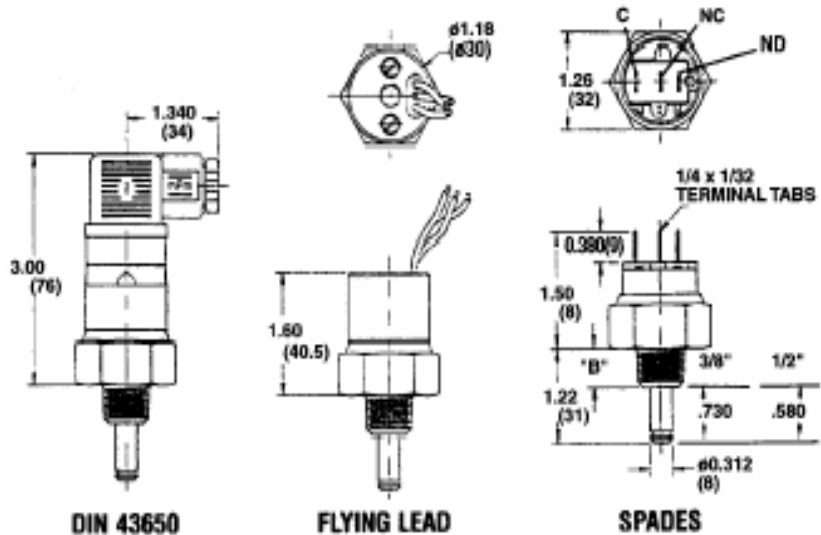


PDTF Factory set temperature switch with fixed differential



General Description

The PDTF is a factory set temperature alarm switch for protection of all types of internal combustion engines, pumps, compressors, gear boxes, hydraulic reservoirs, marine and industrial power plants.

How to Order:

PDTF 100°C R - 6M - C - HC

This is model PDTF set at 100°C with 3/8 Npt Male Connection change over contacts
Din Electrical Connector

Electrical 5AMP resistive / 2AMP Inductive

Notes

1. Differential range from 9°C (19°F) average
2. Pressure to 25 bar (350psi)
3. All switches are CE compliant.

PDTF	2	>	4G	>	C	>	HC	>	
Model	Range		Medium Connection		Switch		Electrical Connections		Options
PDTF	Set Point Rising or Falling		6M = 3/8Npt Male 8M = 1/2 Npt Male		C = Change-over		SP = Spade terminals HC = Din 43650A cable connection HN = Din 43650A 1/2 Conduit (female)		