

PDA/FDA Field Adjustable pressure switch with fixed differential

General Description

The PDA is a inline pressure switch field adjustable ranges from 0.2 bar (3psi) to 10 bar(150psi) depending on a combination of spring rate and actuator area refer, to table opposite for further information.

The FDA switch is constructed of FDA approved Materials except for a zinc plated steel outer support housing to enable it to withstand the higher working pressure without distortion.



Notes

1. Differential range from 10% to 20% of full set point range.
2. PDA Over pressure to 35 bar (500psi)
FDA over pressure to 25 bar (350 psi)
3. All switches are CE compliant.
4. Can be supplied with Gold Contacts for use with PLCs or where (less than 12 volts and 20 milliamp) switching is required.
5. The rate of pressure rise especially in press type applications can adversely effect the switch life cycle expectancy. In this type of application it is recommended that a snubber be fitted.
6. VITON has a much reduced mechanical life.

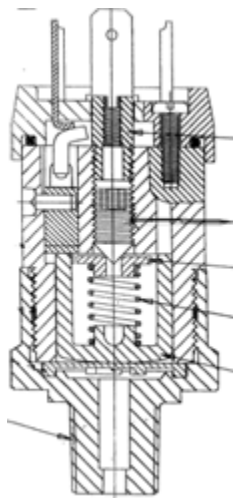
How to Order.

PDA 2 - 4G - C - HC

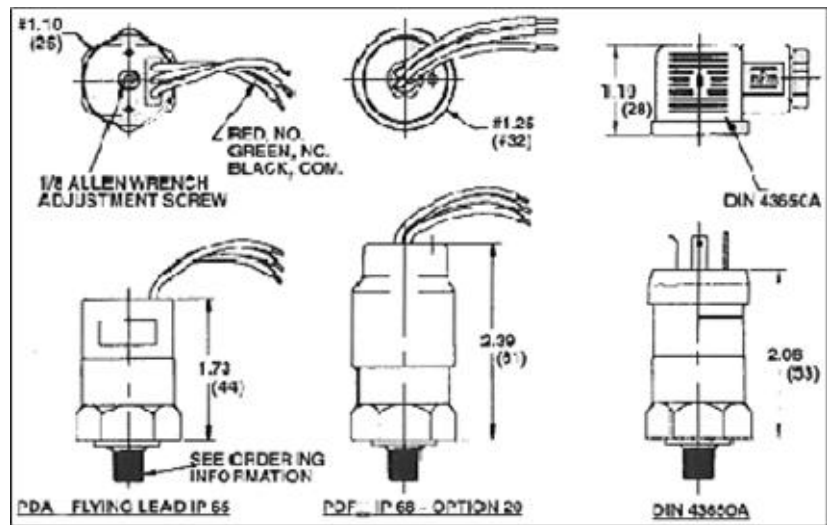
This is model PDA range 2 with 1/4 bsp Male Con change-over contacts and din connector.

PDA	2	>	4G	>	C	>	HC	>		
Model	Range		Medium Connection		Switch		Electrical Connections		Options	
PDA	See table		4G = 1/4 bsp Male		C = Change-over		HC = DIN 43650A		1 = VITON	
FDA			4B = 1/4 bsp female				cable connection		2 = EPDM	
			4BS= 1/4 bsp Female				HN = DIN 43650A		3 = 316 SS	
							1/2 Conduit (female)		7 = Gold	
			Other port thread sizes and options available on request							Contacts

PDA/FDA



Brass screw
Adjustment
Spring
Piston



Electrical	5 AMP - 12/24 VDC - 125/250 VAC
Protection	DIN 43650A - IP65
Temperature range	Ambient & Media - 40°F to + 180 °F (- 40° to +80 °C)
Mechanical Life	10,000000 at 2 bar (70 psi) Nit rile
Diaphragm material	Nit rile Standard (optional EPDM & VITON)
Housing material	Brass Standard (optional 316SS)
Maximum overpressure	25 bar (350psi) 6: 1 Safety factor
Repeatability	± 2% of full set point range @ 20 °C (70 °F)
Weight	0.14kg (0.3lbs)

Adjustment Ranges

Model	Adjustment range		Differential	Wetted parts
	PSI	BAR		
1	3 - 7	0.2 - 0.5	Model PDA has a Fixed differential From approximately 10 to 15% Of full set range	Nit rile And Brass or St ST
2	5 - 30	0.35 - 2		
4	25 - 100	1.5 - 7		
New				
6	70 - 130	5 - 8.5		

How to adjust pressure switch settings

Standard Electrical Circuit		
Wire Colour	din 43650 number	C Circuit
Black	1	Common
Green	2	N. Closed
Red	3	N. Open

1. Adjusting screw > remove plug remove brass centre screw. 1/8" Allen screw underneath.
2. Adjust clockwise set point adjustment to increase set point and counter clockwise to decrease,
3. Replace brass center screw and plug when set point is achieved