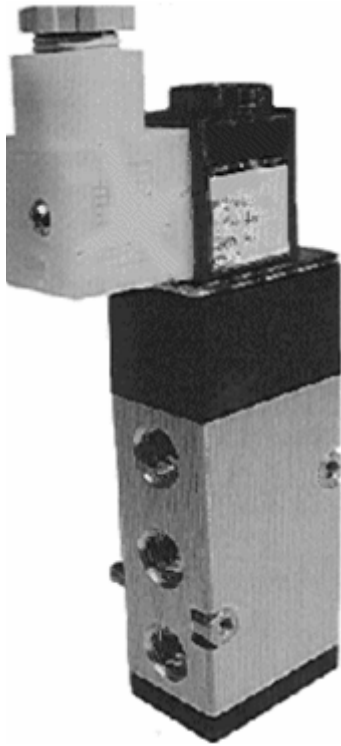


## NAMUR MOUNT 3/2 & 5/2 Solenoid Valves For Pneumatic Actuation

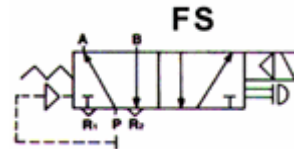
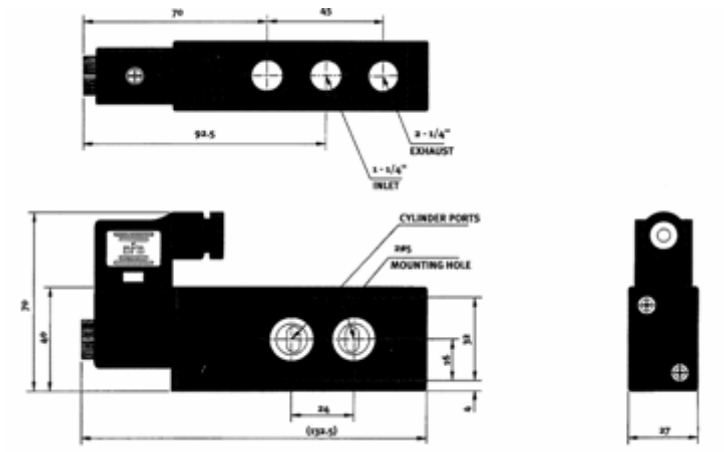


### General Description

This type of solenoid valve can be easily mounted to any actuated process valve with this standard interface flange. Valve shown is with 6mm orifice 1/4" bsp threaded ports.

### Notes

1. Easy assembly to process valve actuator.
2. High Flow rate to 10 bar pressure.
3. Can be supplied either single or dual solenoid.
4. Can also be fitted with silencers or flow restrictors.
5. A wide range of connectors are available ie-LED's.



### HOW TO ORDER:

Example: Gem-N-2206SM-311

Is a 1/4" 5/2 . valve  
slot manual override  
24/50AC coil plus connector.

GEM-N	Body	Port	Function	Coils	M/O	Voltage	Power	Con
Gem - N	2 = Aluminum 20 = 1/4"Bsp	3 = 3W NC 6 = 5/2 W	0 = air pilot S = single D = double	0 = air pilot S = single D = double	M = Manual override standard	2 = 12 3 = 24 5 = 110 8 = 240	1=ACW 50Hz 3 =DC	0 = Without 1 = With 2 = LED