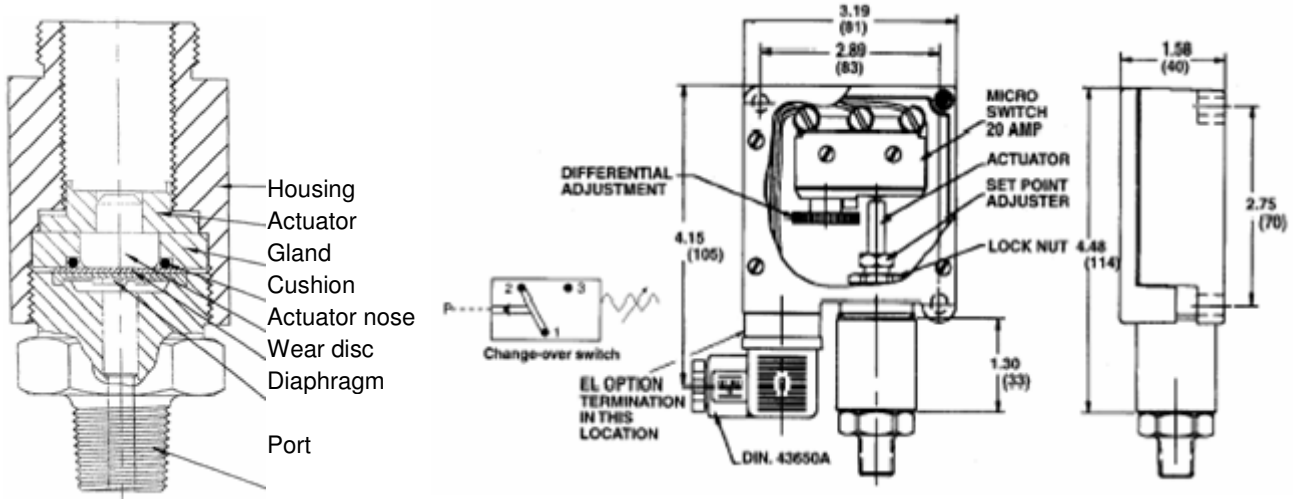


## CFIS



Electrical	20 AMP - 12/24 VDC - 125/250 VAC
Protection	DIN 43650A - IP65
Temperature range	Ambient & Media - 40°F to + 180 °F (- 40° to +80 °C)
Mechanical Life	10,000,000 at 70 Bar (1000 PSI) Nitrile
Diaphragm material	Nitrile Standard (optional EPDM & VITON )
Housing material	Switch housing - reinforced plastic / Cartridge housing - steel
Maximum overpressure	600 Bar (9000PSI)
Repeatability	± 2% of full set point range @ 20 °C (70 °F)
Weight	0.45KG (1.0lbs)

### Adjustment Ranges

Model	Adjustment range		Average differential	Wetted parts
	PSI	BAR		
1A	15 > 75	1 > 5	Model <b>CFIS</b> has an Adjustable differential From approximately <b>10 to 25%</b> Of the full set range	<b>Nitrile</b> And <b>Zinc Plated Steel</b>
1	50 > 150	3.5 > 10		
2	150 > 650	10 > 45		
3	500 > 1750	35 > 120		
4A	1000 > 3500	70 > 240		
4	2500 > 6000	175 > 420		
5	5 > 25	0.35 > 1.7		

### How to adjust pressure switch settings:

Standard Electrical Circuit		
Wire Colour	DIN 43650 number	C Circuit
Black	1	Common
Green	2	N. Closed
Red	3	N. Open

1. Turn set point adjustment nut clockwise to increase set point, and counter clockwise to decrease.
2. Adjust differential thumb wheel clock wise to increase dead band and counter clock wise to decrease the dead band.
3. Repeat steps 1 & 2 until desired set point and dead band is achieved