

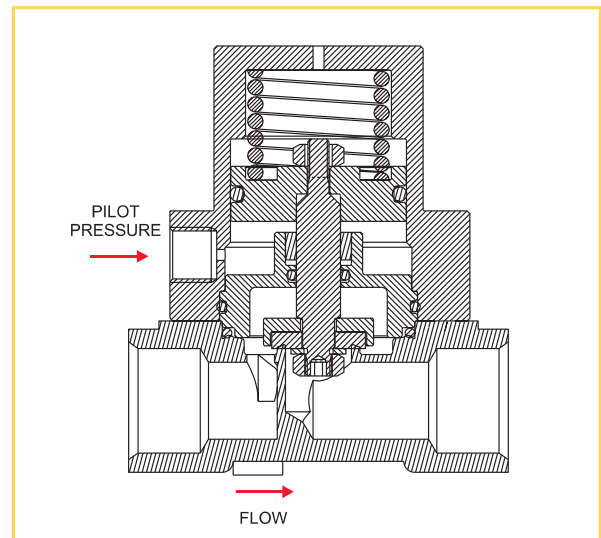
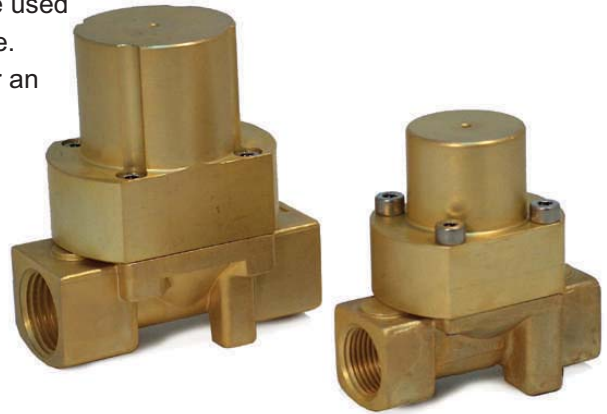
Globe Cylinder Operated 3/8", 1/2", 3/4", 1" 2/2 Way NC

General Description

GC Globe Cylinder operated 2/2 way NC valves are recommended for applications where high flow is required. They can be used in control and automation systems at vacuum or pressure. Typical applications are irrigation and industrial air, water and vacuum systems.

Notes

- Minimum pilot pressure 3 bar.
- See graph of pilot pressure vs. line pressure.
- Stainless steel valves are available only in 3/8" and 1/2".
- To order valves manufactured to your specific requirements, please contact our technical sales department.



How to Order

Example : GC-2160-1N

Is a GC Globe cylinder with brass body, 1" BSP 2WNC with NBR seals.

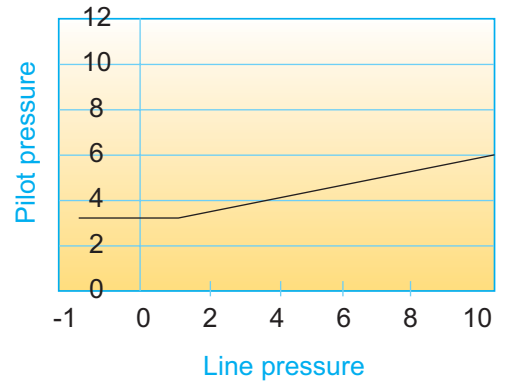
GC	Body	Type	Port	Function	Seals
	Brass 2	Globe 1	3/8" BSP 30	2W NC 1	NBR N
	St.st 3		3/8" NPT 31		EPDM E
			1/2" BSP 40		VITON V
			1/2" NPT 41		
			3/4" BSP 50		
			3/4" NPT 51		
			1" BSP 60		
			1" NPT 61		

Technical Specifications

Functions: 2/2 Way NC
Ports size: 3/8", 1/2", 3/4" BSP & NPT
Pressure and flow: See table
Temperature range: Fluid: 150°C
 Ambient: -10°C to 50°C

Materials in contact with fluid :
Main valve :
 Brass, St.st 316
Seals:
 PTFE and EPDM

Size	Orifice (mm)	Line Pressure
3/8", 1/2"	27	Vacuum-10 Bar
3/4"	20	Vacuum-10 Bar
1"	25	Vacuum-10 Bar



A	B	C	D	E	K	F
3/8",1/2"BSP	93	69	80	38	43	1/8"BSP
3/4"BSP	98	90	81	50	50	1/8"BSP
1"BSP	120	100	100	60	58	1/8"BSP

Dimensions

